

**JACK DEMPSEY MEMORIAL  
12 FOOT SKIFF INVITATION RACE**



# **SAILING INSTRUCTIONS**

Saturday 4<sup>th</sup> February 2017

**CONDUCTED BY ABBOTSFORD 12<sup>FT</sup> SAILING CLUB INC.**  
ON BEHALF OF THE  
N.S.W. 12<sup>FT</sup> SKIFF ASSOCIATION

## 1 ORGANISING AUTHORITY

The organising authority for the regatta is Abbotsford 12' Sailing Club Inc. (A12SC) on behalf of the NSW 12ft Skiff Association Inc.

## 2 RULES

The regatta will be governed by the current rules as defined in the Racing Rules of Sailing and the prescriptions of Yachting Australia, the rules of the respective 12' Skiff Associations (except as any of these are altered by these sailing instructions) and by the sailing instructions and attachments.

## 3 RACE HEADQUARTERS & NOTICES TO COMPETITORS

Race Headquarters will be the clubhouse of A12SC at Werrell Reserve, Abbotsford Point. Notices to competitors will be posted on the official notice board located in the downstairs area of the clubhouse.

## 4 CHANGES TO THE SAILING INSTRUCTIONS

Any changes to the sailing instructions, as approved by the Race Committee, will be posted on the official notice board.

## 5 SIGNALS MADE ASHORE

Signals made ashore will be displayed from the race official's room located on the eastern side of the clubhouse.

When flag AP is displayed ashore, '1 minute' is replaced with 'not less than 20 minutes'

## 6 SCHEDULE OF RACES

Heat 1 Saturday 4<sup>th</sup> February 2017 Warning signal not before 1415 (2:15pm).

Heat 2 Saturday 4<sup>th</sup> February 2017 after Heat 1

The warning signal for Heat 2 shall be as soon as practicable after the earlier of:

- a) all skiffs have finished the prior race or
- b) the expiry of time limits.

## 7 CLASS FLAG

The 12' Skiff class flag will be the warning signal for all races. It is designated as a black 12 on a yellow background.

## 8 RACING AREA

The Racing Area is shown in **Attachment A** and will be the Parramatta River between the Gladesville Bridge and the Putney Punt.

## 9 COURSES

The courses to be sailed will be as per **Attachment B**.

The course to be raced shall be determined by the Race Officer (RO) as to best suit the prevailing weather conditions at the time.

At or prior to the warning signal, a course board designating the course to be sailed will be displayed from the Race Committee Vessel.

## 10 MARKS

Rounding marks will be yellow flag marks displaying the 12 Foot Skiff Class Flag (Black 12 on yellow background).

## 11 MOORED VESSELS

Skiffs shall not pass between any boat on a permanent mooring and the nearest shore. For the purposes of this rule, these boats shall be treated as marks of the course, to be passed on the hand placing them between the competitor and the nearest shore.

## **12 COMMITTEE VESSEL & OTHER OFFICIAL VESSELS**

The committee vessel for the regatta will fly the Abbotsford 12' Sailing Club Inc. burgee. Other official vessels will fly an Abbotsford 12' Sailing Club Inc. burgee or the 12foot skiff class flag.

## **13 THE START**

- 13.1 Races will be started using the system in accordance with RRS 26. Visual signals shall govern. Failure of a sound signal shall be disregarded.
- 13.2 A lone starter shall constitute a race.
- 13.3 A skiff shall not start more than **10** minutes after her starting signal.
- 13.4 The start line shall be between the flagstaff on the committee vessel displaying an Abbotsford 12' Sailing Club Inc. burgee and a mark carrying a Black 12 on a Yellow background.

## **14 THE FINISH**

- 14.1 The finish line shall be between the North- Eastern corner of the clubhouse and a white post on the Gladesville shore to the north- east.
- 14.2 Skiffs will finish by crossing the finishing line from the direction of the last mark.

## **15 PENALTY SYSTEM**

Rules 44.1 and 44.2 are changed so that only one turn, including one tack and one gybe, is required.

## **16 TIME LIMIT**

- 16.1 The time limit for the first boat for each race is 90 minutes. If the first boat has not completed the course within the time limit, the race shall be abandoned.
- 16.2 Skiffs failing to finish within 20 minutes after the first boat finishes, or within the time limit, whichever is later, will be scored Did Not finish. (Amends RRS 35)

## **17 SHORTEN COURSE**

The RO may elect to shorten course in accordance with RRS 32.1. If the Race Committee signals shorten course (displays flag S on a mark of the course, or from an official vessel adjacent to a mark of the course) boats shall round that mark as designated in the course sheet and proceed directly to the finish line.

## **18 PROTESTS**

Protests shall be written on forms available from the regatta office. The protest fee is \$40. The protest time limit is 60 minutes after the last boat has finished the final race of the day. The Protest Committee Chairman and the Protest Committee will be appointed by the Race Committee.

## **19 SAFETY REGULATIONS**

- 19.1 A representative of each boat must sign-on prior to the day's racing, and sign-off within 60 minutes of finishing the last race of each day. The sign-on/off form will be located inside the clubhouse.
- 19.2 Races may not be started if the wind speed exceeds **30** knots consistently over a period of time or as assessed by the race committee or RO, or any lesser wind strength, if in the opinion of the race committee or RO the actual or expected conditions are likely to be unsafe for racing, taking into account all factors, including knowledge of local waters and available rescue facilities.
- 19.3 If conditions deteriorate after the race has started, abandonment of the race is at the discretion of the race committee or RO.
- 19.4 A skiff shall attempt to notify an official vessel of their intention to withdraw from a race and proceed to race headquarters or other shore areas.

## **20 INSURANCE**

Each participating boat shall be insured with a valid third-party liability insurance policy for racing with a minimum cover of \$5 million.

## **21 EVENT DISCLAIMER - RISK AND RESPONSIBILITY**

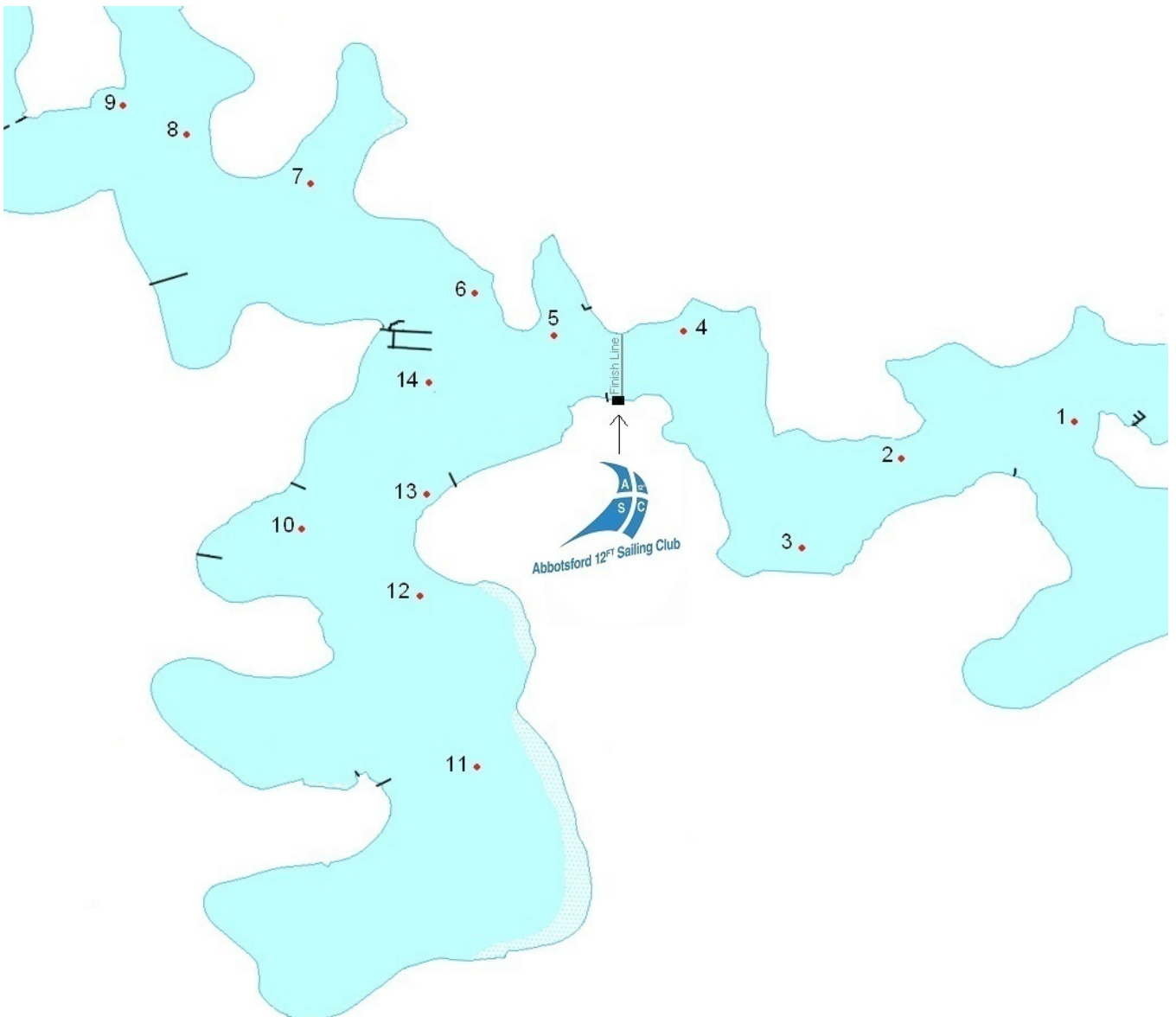
Attention is drawn to the Fundamental Rules, and in particular Rule 4, which states, "The responsibility for a boat's decision to participate in a race or to continue racing is hers alone."

It is the competitor's decision to enter an event or to start and continue in any race. Competitors shall accept that sailing involves inherent risks and that their participation in an event is at their exclusive risk in every respect. By way of entry in an event, competitors waive any liability for, and further and/or in the alternative indemnify Abbotsford 12ft Sailing Club Inc, its officers, members, servants, employees and agents, whether paid or unpaid in respect of all claims, suits, demands, actions for damages or claims for compensation or other claims as may seem open to them for any personal injury, including defamation, or property damage arising from, in connection with, or howsoever arising from their intended participation in or actual participation in any event either organised by Abbotsford 12ft Sailing Club Inc, or in which Abbotsford 12ft Sailing Club Inc, has any interest as an organiser, facilitator, adviser, or provider of facilities. In accordance with clause 25 of the relevant Aquatic Licences competitors are advised that the organiser's insurances do not cover competitors for injury or loss sustained as a result of participating in this event.

## ATTACHMENT A

### MAP OF PARRAMATTA RIVER FROM GLADESVILLE BRIDGE TO PUTNEY

- |                  |                |                   |                     |
|------------------|----------------|-------------------|---------------------|
| 1. Five Dock     | 2. Henley      | 3. Abbotsford Bay | 4. Bedlam Point     |
| 5. Looking Glass | 6. Grammar     | 7. Glades Bay     | 8. Morrison Bay     |
| 9. Putney        | 10. France Bay | 11. Exile Bay     | 12. Hen and Chicken |
| 13. Quarantine   | 14. Cabarita   |                   |                     |



## ATTACHMENT B - COURSE SHEET

### SHORT COURSES

#### **No. 5 (S) NORTH & NE**

Start- vicinity of Cabarita

4	Bedlam Point	(P.H)
10	France Bay	(P.H)
4	Bedlam Point	(P.H)
10	France Bay	(P.H)
4	Bedlam Point	(P.H)
10	France Bay	(P.H)

Finish at clubhouse

#### **No. 6 (S) WEST & NW**

Start- vicinity of Bedlam Bay

7	Glades Bay	(P.H)
4	Bedlam Point	(P.H)
7	Glades Bay	(P.H)
4	Bedlam Point	(P.H)
7	Glades Bay	(P.H)

Finish at clubhouse

#### **No. 7 (S) SOUTH**

Start- vicinity of Quarantine

11	Exile Bay	(P.H)
10	France Bay	(S.H)
11	Exile Bay	(P.H)
10	France Bay	(S.H)
11	Exile Bay	(P.H)
14	Cabarita	(S.H)

Finish at clubhouse

#### **No. 8 (S) EAST & SE**

Start- vicinity of Bedlam Bay

3	Abbotsford Bay	(P.H)
7	Glades Bay	(P.H)
3	Abbotsford Bay	(P.H)
7	Glades Bay	(P.H)

Finish at clubhouse