



12ft SKIFF UPPER HARBOUR CHAMPIONSHIP

conducted by

Lane Cove 12ft Sailing Skiff Club (LC12ftSSC)
on behalf of the NSW 12ft Sailing Skiff Association
Saturday 14th October 2017

1. RULES

The regatta will be governed by the rules as defined in The Racing Rules of Sailing (RRS) of World Sailing, and the Prescriptions of Australian Sailing, the NSW 12ft Sailing Skiff Association and these sailing instructions.

2. ELIGIBILITY

The regatta is open to all 12ft Skiffs that comply with the measurement rules of, and are registered and financial with the NSW 12ft Sailing Skiff Association.

3. NOTICES TO COMPETITORS

Notices to competitors will be posted on the official notice board located at the Lane Cove 12ft Sailing Skiff Club, clubhouse, Stuart Street, Longueville, NSW

4. CHANGES TO SAILING INSTRUCTIONS

Any change to the sailing instructions will be posted before 12:30 pm on Saturday 14th October 2017.

5. SIGNALS MADE ASHORE

- 5.1 Signals made ashore will be displayed at the LC12ftSSC clubhouse.
- 5.2 When flag AP is displayed ashore, '1 minute' is replaced with 'not less than 30 minutes' in the race signal AP.

6. SCHEDULE OF RACES

Saturday 14th October 2017, not before 14:45

7. RACING AREA

The Racing area is the lower reaches of the Parramatta River between Goat Island and Gladesville Bridge.

PROHIBITED WATER (WHICH RANKS AS AN OBSTRUCTION)

- a. The area of water between registered moorings and the adjacent shoreline shall be considered PROHIBITED WATER (i.e. continuing obstruction for the boats that are racing).
- b. The area of water between the Spectacle Island “piles” on north western shore of Spectacle Island and the adjacent shoreline shall be considered PROHIBITED WATER (i.e. continuing obstruction for the boats that are racing)

Boats that enter Prohibited Water are required to exit by the same path they entered. Where it is unsafe or impractical to exit via the same path, the boat shall exit by the most direct path and take a penalty in accordance with RRS 44.1, however if the boat gains an advantage from the alternate action it will be disqualified. This amends RRS 44.1.

8. THE COURSES

Courses as described in the Attachment 1

DISPLAY OF COURSE DESIGNATION will be by number board displayed from the veranda of the clubhouse prior to the preparatory signal.

9. CHANGE OF COURSE AFTER THE START

9.1 SHORTENING COURSE

The race committee may shorten the course at any rounding mark and will display code flag “S” from an official club boat in accordance with RRS Rule 32. The finish will be as described in Instruction 12.2

9.2 CHANGE OF COURSE WHILE RACING

The race committee may change the course at any rounding mark, and will display code flag “C” from an official club boat, located near the mark. In this event boats shall round that mark on the prescribed hand and proceed directly to the finishing line as described in Instruction 12.1.

This changes RRS Rule 33

9.3 ADDITION OF A CLASS FLAG TO CODE FLAG “S” OR “C”

If code flag “S” (instruction 9.1) or code flag “C” (instruction 9.2) are displayed with a class flag, then the instruction 9.1 or 9.2 will only apply to boats of the class whose flag is displayed. This changes RRS Rules 32 and 33

10. MARKS

Course marks are

- 12 Foot Skiff Class Flag mark = yellow flag with black “12”
- B&W flag mark = white/black/white horizontal bar flag

except:

- (i) Clubhouse Clearance mark shall be a buoy displaying a white/black/white horizontal bar flag.
- (ii) (14) Cockatoo Island is the island
(15) Snapper Island is the island.

11. THE START

- 11.1 Races will be started by using RRS 26, with the warning signal given 5 minutes before the starting signal. The Class flag for this regatta is a yellow flag with a black "12".
- 11.2 The start line will be between the flagpole on the South-Eastern corner of the clubhouse veranda, and a flag mark, set approximately south of the clubhouse.

There may be a clearance mark set just south of the flagpole. If the clearance mark is set it shall be cleared on the same hand as the clubhouse. The clearance mark may be used if "RRS" Rule 30.1 applies.
- 11.3 The start line will be crossed in the direction to the next mark.

12. THE FINISH

Finishing will be in accordance with RRS Rule 28.

- 12.1 The finishing line will be between an Orange flag displayed from the clubhouse veranda and a flag mark, set approximately south of the clubhouse. There may be a Clubhouse clearance mark set just south of the Orange flag.
- 12.2 In the event of a shortening of course as described in Instruction 9.1 the finish line will be between the rounding mark and the official club boat displaying code flag "S". Skiffs finishing such a shortened course shall pass the rounding mark on the prescribed hand.

13. PENALTY SYSTEM

Rules 44.1 and 44.2 are changed so that only one turn, including one tack and one gybe, is required.

14. TIME LIMITS

The time limit shall be 180 minutes from the starting signal.

15. PROTESTS AND REQUESTS FOR REDRESS

All "Protests" and "Requests for Redress" shall conform to RRS Rules 60 to 68 inclusive with the following qualifications.

- 15.1 Protests shall be in writing in the format presented in "RRS Protest Form". The protest fee is \$30.
- 15.2 The protest time limit is 90 minutes after the last boat has finished and shall be lodged with the Lane Cove 12 Foot Skiff Class Secretary or their representative.
- 15.3 Notices will be posted within 30 minutes of the protest time limit to inform competitors of hearings in which they are parties or named as witnesses. Hearings will be held in the George Eden Room of the Lane Cove 12ft Sailing Skiff Club as soon as is practical after the protest time limit.

16. DISCLAIMER OF LIABILITY

It is the competitor's decision to enter or to start and continue in any race. Competitors shall accept that their participation is at their exclusive risk in every respect. By way of entry competitors shall indemnify the Organising Authorities, the host Sailing Club, their officers, members, servants and agents in respect to all claims and demands of whatever nature which may be made upon them in connection with or howsoever arising from their participation or intended participation.

The Organising Authorities, the host Sailing Club, their officers, members, servants and agents accept no responsibility in respect of loss of life, personal injury or loss or damage to property which may be sustained by reason of their participation or intended participation in an Event or howsoever arising in connection with an Event.

17. RISK WARNING

Participation in recreational activities supplied by or on behalf of or at the Club is at the participant's own risk. Participants are warned (i) that sailing, boating and associated activities are a dangerous recreational activity and (ii) that by participating in sailing, boating and associated activities they may be exposed to significant risk of personal injury or possibly death. As an indication only, possible risks include personal injury or possibly death caused by (i) vessels, including equipment on vessels, loss of or limited control of vessels, sudden or violent movement by vessels and/or the possibility that vessels may collide and/or participants may fall or be thrown overboard from vessels (ii) slipways, stairs, passageways, structures and buildings, including where all or any of those things are wet or slimy (iii) weather and sea conditions (iv) exposure to the elements for extended periods (v) the absence of immediate medical care and the likelihood that significant delays may occur before medical care is available, and that all or any of these risks may arise notwithstanding the precautions which might be taken by reasonable and experienced persons. It is a term of any contract between the Club and any person for recreation services within the meaning of the *Civil Liability Act 2002 (NSW)* that the person engages in any recreational activity supplied under or pursuant to that contract at the person's own risk.

18. INSURANCE

Each participating boat shall be insured with valid third-party liability insurance with a minimum cover of AUD \$5 million. All owners/competitors who participate in the regatta are deemed to have made a declaration that they hold such cover. Competitors may be required to produce evidence of such insurance and any competitor not holding this cover shall withdraw their entry.

19. NOTICE TO COMPETITORS

Competitors shall keep clear of Sydney Harbour Transport vessels displaying an orange diamond.

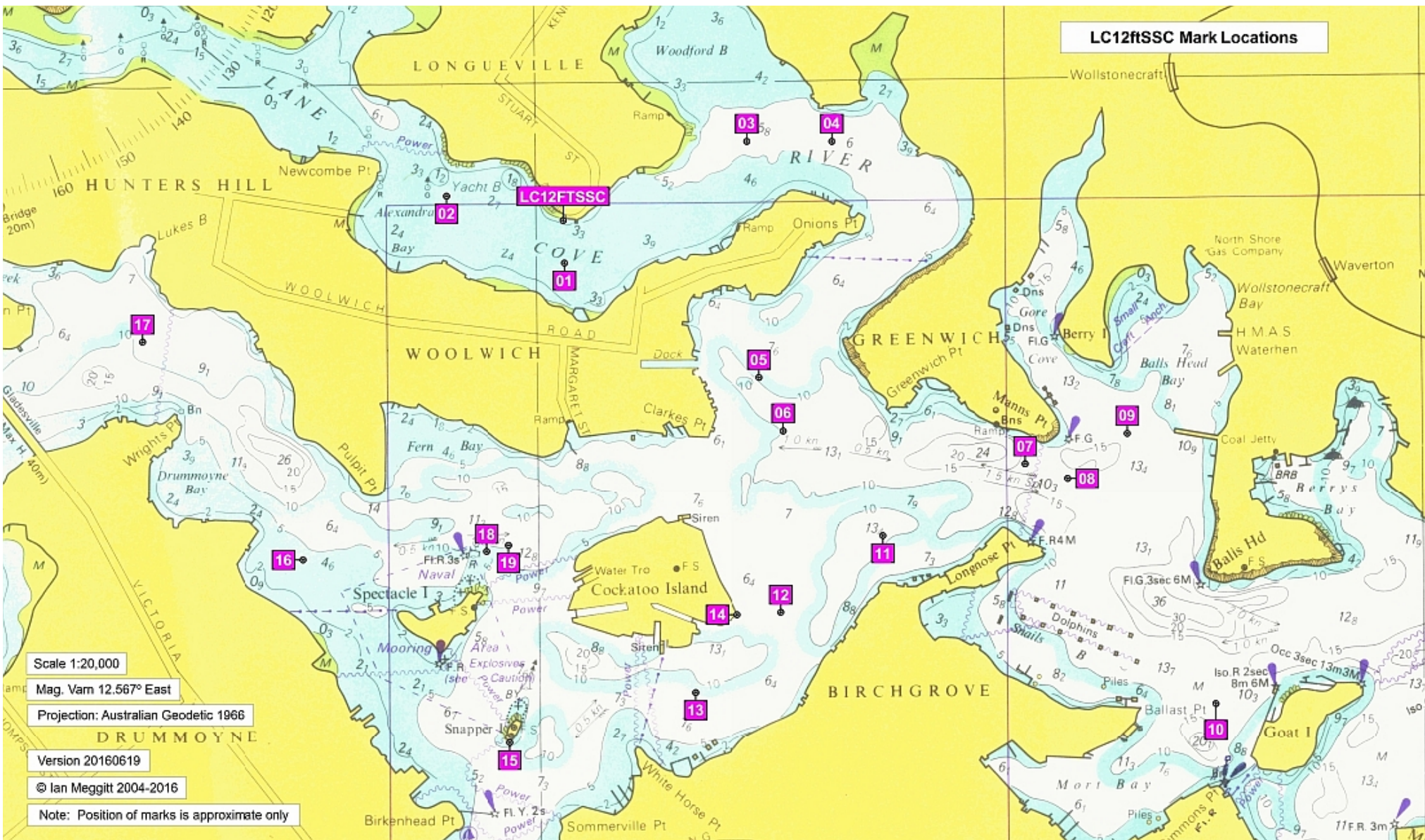
ATTACHMENT 1

| 1 | North East Wind | 2 | East Wind |
|----------|-----------------------------------|----------|----------------------------------|
| 1 | Start Clubhouse | 1 | Start Clubhouse |
| 13 | White Horse Point - flag mark (P) | 5 | Valentia Street - flag mark (P) |
| 8 | Manns Point - flag mark (P) | 7 | Manns Point West - flag mark (P) |
| 19 | Spectacle Island - flag mark (S) | 16 | Drummoyne - flag mark (S) |
| 8 | Manns Point - flag mark (P) | 7 | Manns Point West - flag mark (P) |
| 13 | White Horse Point - flag mark (P) | 5 | Valentia Street - flag mark (P) |
| 8 | Manns Point - flag mark (P) | 19 | Spectacle Island - flag mark (S) |
| 19 | Spectacle Island - flag mark (S) | 7 | Manns Point West - flag mark (P) |
| 4 | Northwood - flag mark (P) | 11 | Birchgrove - flag mark (S) |
| 1 | Finish Clubhouse | 1 | Finish Clubhouse |

| 3 | South Wind | 4 | West Wind |
|----------|---------------------------------|----------|----------------------------------|
| 1 | Start Clubhouse | 1 | Start Clubhouse |
| 3 | Woodford Bay - flag mark (S) | 2 | Alexandra Street - flag mark (P) |
| 5 | Valentia Street - flag mark (P) | 11 | Birchgrove - flag mark (P) |
| 10 | Goat Island - flag mark (S) | 8 | Manns Point - flag mark (P) |
| 9 | Balls Head Bay - flag mark (S) | 16 | Drummoyne - flag mark (P) |
| 10 | Goat Island - flag mark (S) | 15 | Snapper Island (P) |
| 9 | Balls Head Bay - flag mark (S) | 8 | Manns Point - flag mark (P) |
| 10 | Goat Island - flag mark (S) | 5 | Valentia Street - flag mark (P) |
| 9 | Balls Head Bay - flag mark (S) | 11 | Birchgrove - flag mark (S) |
| 10 | Goat Island - flag mark (S) | 1 | Finish Clubhouse |
| 5 | Valentia Street - flag mark (P) | | |
| 11 | Birchgrove - flag mark (S) | | |
| 1 | Finish Clubhouse | | |

| 5 | South Wind (Alternate) |
|----------|--|
| 1 | Start Clubhouse |
| 3 | Woodford Bay - flag mark (S) |
| 14 | Cockatoo Island (S) |
| 15 | Snapper Island (S) |
| 17 | Tarban Creek - flag mark (P) |
| 15 | Snapper Island (P) |
| 18 | Spectacle Island (P) observe channel mark |
| 17 | Tarban Creek - flag mark (P) |
| 15 | Snapper Island (P) |
| 14 | Cockatoo Island (P) |
| 5 | Valentia St flag mark (S) |
| 12 | Cove Street - flag mark (P) |
| 1 | Finish Clubhouse |

LC12ftSSC Mark Locations



Scale 1:20,000

Mag. Var 12.567° East

Projection: Australian Geodetic 1966

Version 20160619

© Ian Meggitt 2004-2016

Note: Position of marks is approximate only